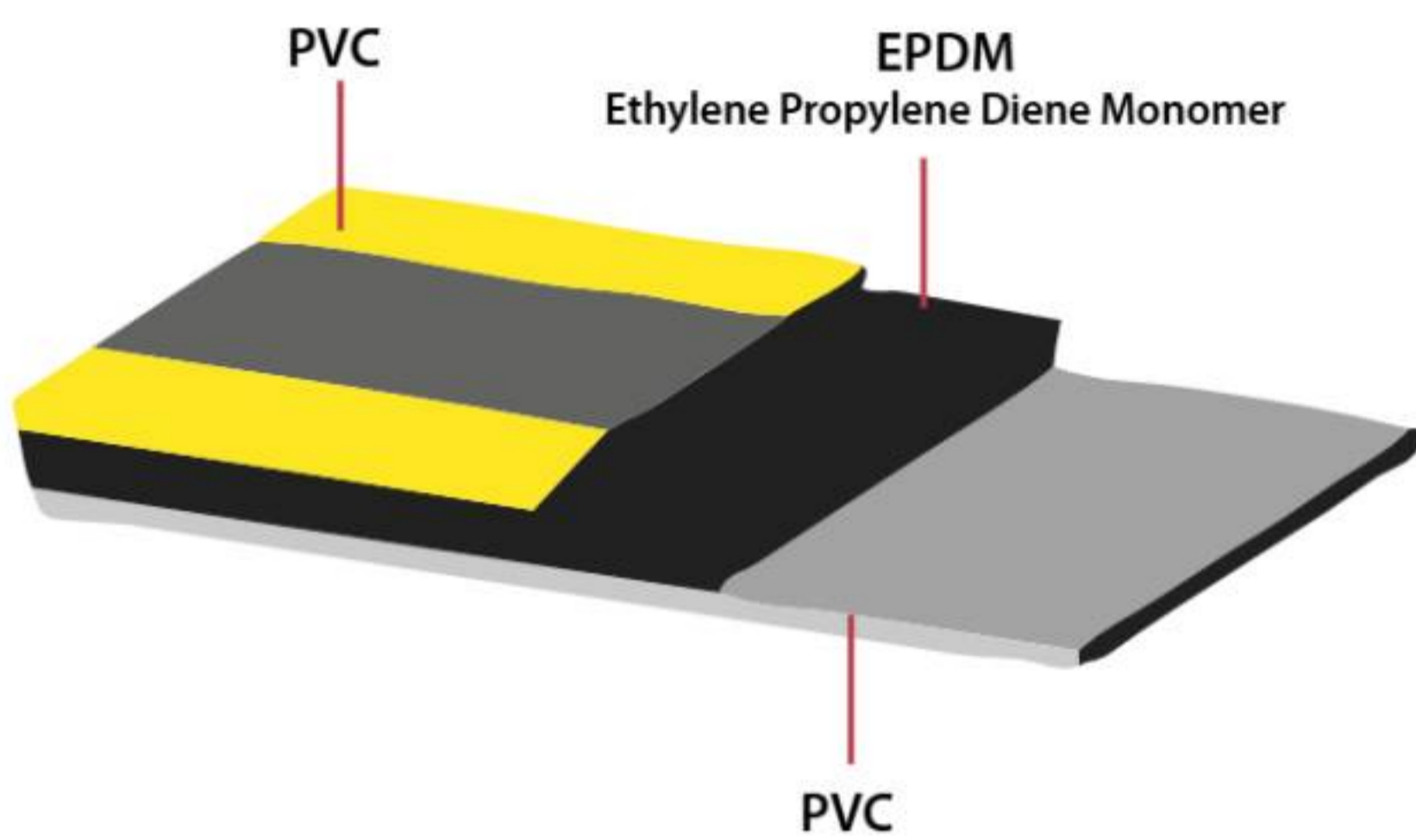


# ESD Anti-Fatigue Mat

**AFM6191**



## Features

- 3 layer constructure, surface PVC material, middle layer is EPDM, bottom is PVC material. Designed specifically to reduce fatigue as a standing surface.
- Provides good anti-fatigue properties, improving worker comfort.
- Slip resistant and soil resistant heavy embossed texture. Safe surface for workers, mat stays clean.
- Durable top wear layer.
- Non-humidity dependence.
- Dimensionally stable.
- Minimal shrinkage and curling.
- Provides consistent electrical performance regardless of ambient humidity.

## Product Specification

Material	PVC & EPDM Foam
Size	610x910mm / 610x450 / Customized size available
Thickness	18mm
Texture	Industrial Diamond Plate
Color	Black & Yellow
ESD Type	Surface 10e6-10e9 ohms Bottom 10e4-10e6 ohms

## Packaging Information








10 Pieces / non-woven bag  
100 Pieces / wooden pallet



## Applications

- Manufacturing plants
- Assembly lines
- Packing and Logistics warehouses
- Individual workstations
- Reception desks
- Shop counters
- Department stores
- Banks

## Industries

-  Aviation
-  Power
-  Warehousing & Logistics
-  Automotive
-  Beauty & Saloon
-  Institutions
-  Restaurant & Kitchen

Note:  
Wear ability 1 year  
Antistatic property permanently  
Grounding Hardware Not Included

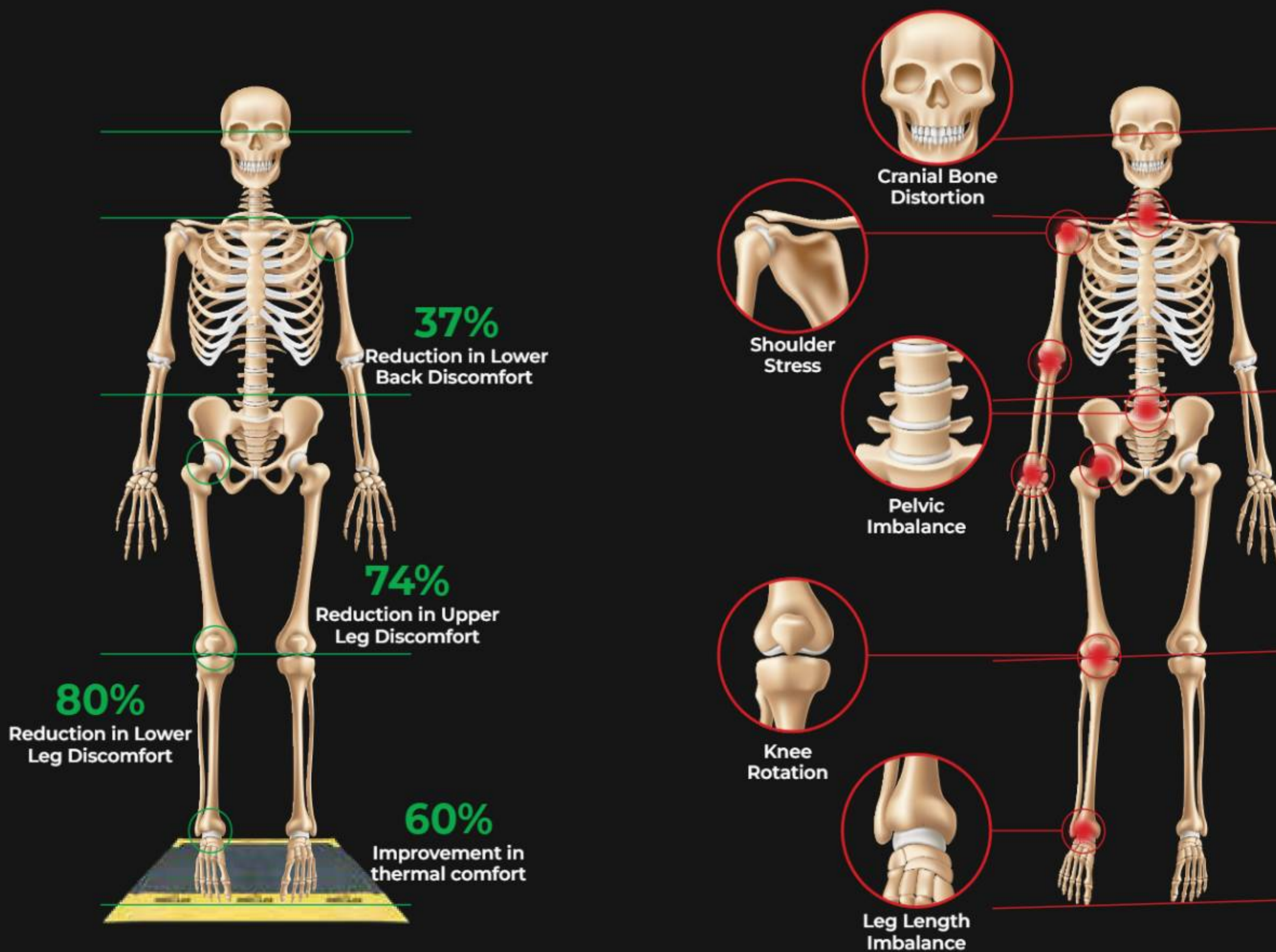
# ESD Anti-Fatigue Mat

**AFM6191**

## SKU Information

Product SKU	Size	Inner pack UPC	Carton GTIN
BLSH-AFM-YBK-1	610x910x18mm	810148535575	00810148535582

## THE BENEFITS OF ANTI-FATIGUE MATS

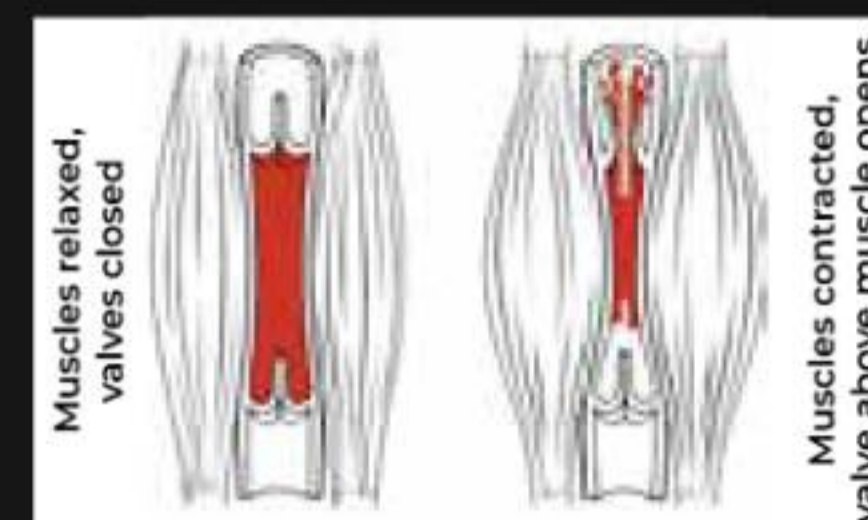


### BALANCED

- Improves structural alignment and joint function
- Improves muscular balance and prevents nerve impingement
- Reduces uneven wear and tear on joints
- Body weight evenly distributed
- Efficient natural movement
- Reduced pressure on organs

### IMBALANCED

- Neck pain and headaches
- Shoulder restrictions and pain
- Arm and hand pain nerve entrapment
- Bulging discs/back pain
- Uneven pressure/knee pain
- Uneven weight distribution
- Foot and ankle pain



This blood pooling in the legs and the increased pressure on joints causes pain and discomfort, which can eventually result in a work-related musculoskeletal disorder if not diagnosed and treated where necessary.

Due to gravity's effect on our bodies because of our upright position, we are designed to be moving rather than standing still as when we are stationary, our muscles are required to tense to stop us from losing our balance. This causes greater fatigue too.

A study by Loughborough University found that just 90 minutes of continuous standing can cause an individual to feel uncomfortable, which may seem like a short amount of time to someone who spends their whole working day on their feet.