



ConAer - CA300AFI Filter and Regulator Panel is a compressed breathing air purifier system designed to help remove or reduce selected contaminants that are found in standard compressed airlines.

Applications

- Spray Painting
- Chemical Treatment
- Powder Handling & Mixing
- Clean Room
- Laboratory

Specification

Inlet pressure (max.)	150 psi static
Rated air flow (max.)	50 cfm (1416 L/min) at 105 psi
Inlet pressure (recommended)	90 to 120 psi (6.2-8.3 bar)
Outlet pressure range	0 to 115±5 psi (0 to 7.2±0.34 bar)

Industries



Automotive



Chemical



Pharmaceutical



Heavy Engineering



Windmill Manufacturing

1. Air Entry:

- Air entering the filtration system at the inlet may be contaminated with oil, water, dirt, rust, scale and vaporous hydrocarbons.
- Air enters the panel through the Air Inlet point 1/2" female thread port **(A)**.

2. Three Stage Filtration:

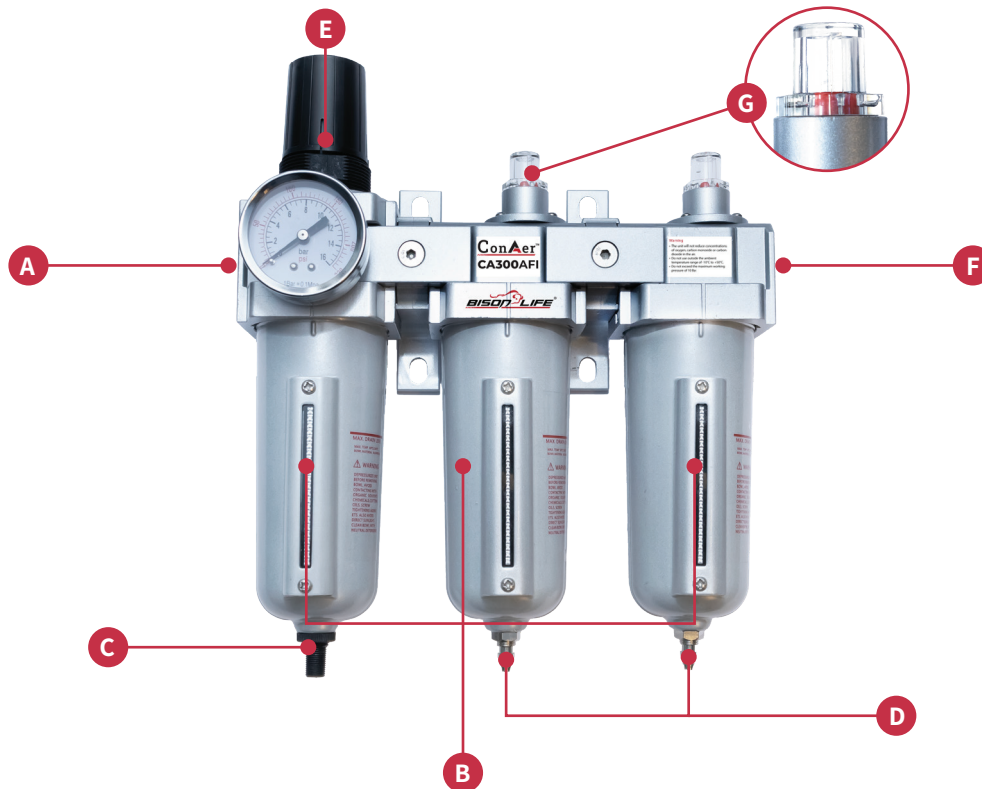
- The Filter and Regulator Panel contains three filters **(B)** designed to remove liquid droplets, particles, and nuisance odors.
- Liquid contaminants are trapped in the filter assembly and expelled through the auto drain valve **(C)** manual drain valve **(D)**.
- It contains air pressure regulator **(E)**, which is used to adjust the air pressure going to the respirators.

3. Filter Panel:

- Maximum capacity of 50 cfm at 105 psi,
- Require a source of breathable compressed air system or air cylinder
- No battery requirement to maintain
- Cost-effective respiratory protection for All-Day use

4. Couplings:

- It has CEJN 342 series quick couplings (**F**) that ensure to supply breathing air to helmets, hoods or tight-fitting facepieces.
- Quick couplings are compatible with Bisonlife provided breathing air hose for SAR application only.



5. Filter Elements:



5 µm Brass filter element: Excellent filtration performance, longer life and possibility to reuse

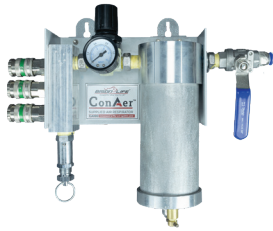
0.5 µm filter element: Effective filter out smaller particles and coalescing filter effect to eliminate water & oil droplets from the air stream.

0.01 µm filter element: Effective filter out the smallest particles and odor from the air stream.

6. Filter Change Indicator:

- The filter change indicators (**G**) signals when the filter element needs to be replaced.
- Whenever the red indicator pops up, the element must be replaced.





CA100
Single Stage Filter



CA300M
Three Stage Filter
Manual Drain



CA300A
Three Stage Filter
Auto Drain

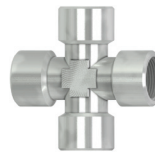


CA300AFI
Three Stage Filter
Auto Drain
Filter Indicator

Manifold



CA2MF38
2 Way Manifold



CA3MF38
3 Way Manifold

Breathing Air Hose



CA101-S20
Spiral Hose (20 Feet)



CA101B-S20
Spiral Hose (20 Feet)



CA101-Series
Straight Hose
Available Length in Feet - 25, 32, 50, 65, 102



CA101B-Series
Straight Hose



Can be connected with all Bison Life's
Half Face & Full Face Respirators



W400 Air



W500 Air



HH500



SH300



SH400

Can be connected with all Bison Life's Welding Shields, Soft Hoods & Hard Hoods



CABT01
Standard
Breathing
Tube



CABT02
Quick Release
Breathing
Tube



CA102
Regulator with Face Piece
Connector and Waist Belt



CAA01
Breathing Tube Adapter
with Airflow Regulator



CAVX01
ConAer Vortex Cooling
Device

Airline Suit



	Model No.	Product Description
	CA300AFI	Compressed airfilter & regulation panel
	CA101-25	Supplied air hose -7.5m (25ft)
	CA101-32	Supplied air hose -10m (32ft)
	CA101-50	Supplied air hose -15m (50ft)
	CA101-65	Supplied air hose -20m (65ft)
	CA101-102	Supplied air hose -31m (102ft)
	CA101B-25	Supplied air hose -7.5m (25ft)
	CA101B-32	Supplied air hose -10m (32ft)
	CA101B-50	Supplied air hose -15m (50ft)
	CA101B-65	Supplied air hose -20m (65ft)
	CA101B-102	Supplied air hose -31m (102ft)
	CA101-S20	Supplied air Spiral hose -6m (20ft)
	CA101B-S20	Supplied air Spiral hose -6m (20ft)
	CA102	Regulator with Face Piece Connector and Waist Belt
	CA301B	Internal Filter - Brass
	CA301C	Internal Filter - Coalescing & Particle
	CA301P	Internal Filter - Small Particle & Odour