

ConAer - CA300A Filter and Regulator Panel is a compressed breathing air purifier system designed to help remove or reduce selected contaminants that are found in standard compressed airlines.






### Applications

- Spray Painting
- Chemical Treatment
- Powder Handling & Mixing
- Clean Room
- Laboratory

### Specification

Inlet pressure (max.)	150 psi static
Rated air flow (max.)	50 cfm (1416 L/min) at 105 psi
Inlet pressure (recommended)	90 to 120 psi (6.2-8.3 bar)
Outlet pressure range	0 to 115±5 psi (0 to 7.2±0.34 bar)

### Industries

-  Automotive
-  Chemical
-  Pharmaceutical
-  Heavy Engineering
-  Windmill Manufacturing

#### 1. Air Entry:

- Air entering the filtration system at the inlet may be contaminated with oil, water, dirt, rust, scale and vaporous hydrocarbons.
- Air enters the panel through the Air Inlet point 1/2" female thread port **(A)**.

#### 2. Three Stage Filtration:

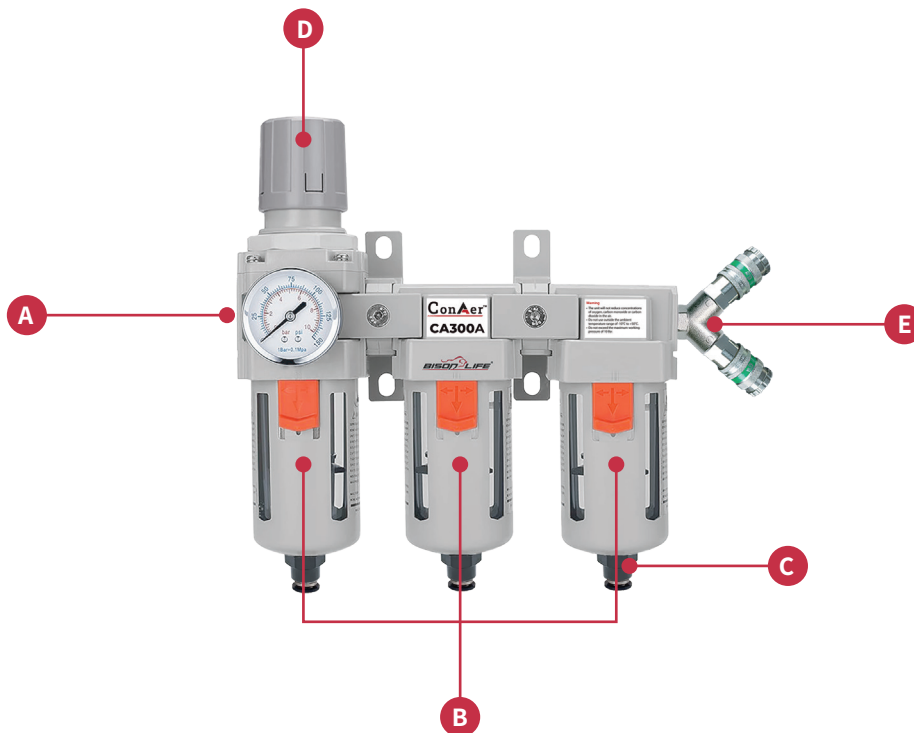
- The Filter and Regulator Panel contains three filters **(B)** designed to remove liquid droplets, particles, and nuisance odors.
- Liquid contaminants are trapped in the filter assembly and expelled through the auto drain valve **(C)**.
- It contains air pressure regulator **(D)**, which is used to adjust the air pressure going to the respirators.

### 3. Filter Panel:

- Maximum capacity of 50 cfm at 105 psi,
- Require a source of breathable compressed air system or air cylinder
- No battery requirement to maintain
- Cost-effective respiratory protection for All-Day use

### 4. Couplings:

- It has CEJN 342 series quick couplings (**E**) that ensure to supply breathing air to helmets, hoods or tight-fitting facepieces.
- Quick couplings are compatible with Bisonlife provided breathing air hose for SAR application only.



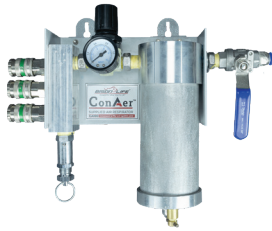
### 5. Filter Elements:



5 µm Brass filter element: Excellent filtration performance, longer life and possibility to reuse

0.5 µm filter element: Effective filter out smaller particles and coalescing filter effect to eliminate water & oil droplets from the air stream.

0.01 µm filter element: Effective filter out the smallest particles and odor from the air stream.



**CA100**  
Single Stage Filter



**CA300M**  
Three Stage Filter  
Manual Drain



**CA300A**  
Three Stage Filter  
Auto Drain

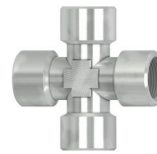


**CA300AFI**  
Three Stage Filter  
Auto Drain  
Filter Indicator

Manifold



**CA2MF38**  
2 Way Manifold



**CA3MF38**  
3 Way Manifold

Breathing Air Hose



**CA101-S20**  
Spiral Hose (20 Feet)



**CA101B-S20**  
Spiral Hose (20 Feet)



**CA101-Series**  
Straight Hose  
Available Length in Feet - 25, 32, 50, 65, 102



**CA101B-Series**  
Straight Hose



Can be connected with all Bison Life's  
Half Face & Full Face Respirators



**W400 Air**



**W500 Air**



**HH500**



**SH300**



**SH400**

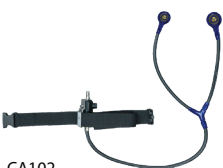
Can be connected with all Bison Life's Welding Shields, Soft Hoods & Hard Hoods



**CABT01**  
Standard  
Breathing  
Tube



**CABT02**  
Quick Release  
Breathing  
Tube



**CA102**  
Regulator with Face Piece  
Connector and Waist Belt



**CAA01**  
Breathing Tube Adapter  
with Airflow Regulator



**CAVX01**  
ConAer Vortex Cooling  
Device

Airline Suit



	Model No.	Product Description
	CA300A	Compressed airfilter & regulation panel
	CA101-25	Supplied air hose -7.5m (25ft)
	CA101-32	Supplied air hose -10m (32ft)
	CA101-50	Supplied air hose -15m (50ft)
	CA101-65	Supplied air hose -20m (65ft)
	CA101-102	Supplied air hose -31m (102ft)
	CA101B-25	Supplied air hose -7.5m (25ft)
	CA101B-32	Supplied air hose -10m (32ft)
	CA101B-50	Supplied air hose -15m (50ft)
	CA101B-65	Supplied air hose -20m (65ft)
	CA101B-102	Supplied air hose -31m (102ft)
	CA101-S20	Supplied air Spiral hose -6m (20ft)
	CA101B-S20	Supplied air Spiral hose -6m (20ft)
	CA102	Regulator with Face Piece Connector and Waist Belt
	CA301B	Internal Filter - Brass
	CA301C	Internal Filter - Coalescing & Particle
	CA301P	Internal Filter - Small Particle & Odour