

# FallSafe™

## Over the Roof



**EN 795 Type C**  
**CEN/TS 16415 (Multi User)**  
**IS 3521 Part - 8**

### Roof Top Anchor Post Extremity

Made from SS316 grade. Fixes with Trapezoidal roof sheets. Provides Anchorage points for Lifeline. Fixed at both ends of the lifeline.

### Tensioner

Made from SS316 grade to provides Swageless termination & maintains required tension to the cable. Fits 08mm diameter cable.

### Roof Top Anchor Post Intermediate

Made from SS316 grade. Fixes with Trapezoidal roof sheets. Has Intermediate Bracket to reduce cable sag.

### Pass Through Detachable Trolley

Made from SS316 grade. Provides smooth travel on the 08mm cable. Pass through type is used in Continuous multi span type Lifelines.

### Roof Top Anchor Post Corner

Made from SS316 grade. Fixes with Trapezoidal roof sheets. Has corner piece to provide uninterrupted turning movement Feature.

### Shock Absorber

Spring type design. Made from SS316 grade. Absorbs shock generated during a fall which avoids transfer to the user and the structure.

### Wire Rope

SS 316 grade to provide high corrosion resistance and long life in harsh environments. Diameter 08mm, 7x19 Construction.

### Intermediate Bracket

SS316 bracket with mounting hardware. To reduce cable sag. Fits with 08mm Dia cable. Recommended to be installed every 10 to 15mtrs.

### Corner Piece

Made from SS 316 grade to provide uninterrupted turning features to the lifeline. Fits with 08mm Dia cable.

### Cable Extremity

Made from Stainless Steel 316 grade to provide high corrosion resistance. Provides swageless termination to the cable. Fits 08mm diameter cable. Fixed at one end of the lifeline.

**HORIZONTAL FALL ARREST SYSTEM (OR) - TRAPEZOIDAL**

# FallSafe™

## Over the Head

### Roof Top Anchor Post Extremity

Made from SS316 grade. Fixes with Trapezoidal roof sheets. Provides Anchorage points for Lifeline. Fixed at both ends of the lifeline.

### Tensioner

Made from SS316 grade to provides Swageless termination & maintains required tension to the cable. Fits 08mm diameter cable.

### Roof Top Anchor Post Intermediate

Made from SS316 grade. Fixes with Trapezoidal roof sheets. Has Intermediate Bracket to reduce cable sag.

### Pass Through Detachable Trolley

Made from SS316 grade. Provides smooth travel on the 08mm cable. Pass through type is used in Continuous multi span type Lifelines.

### Roof Top Anchor Post Corner

Made from SS316 grade. Fixes with Trapezoidal roof sheets. Has corner piece to provide uninterrupted turning movement Feature.

### Shock Absorber

Spring type design. Made from SS316 grade. Absorbs shock generated during a fall which avoids transfer to the user and the structure.

### Wire Rope

SS 316 grade to provide high corrosion resistance and long life in harsh environments. Diameter 08mm, 7x19 Construction.

### Intermediate Bracket

SS316 bracket with mounting hardware. To reduce cable sag. Fits with 08mm Dia cable. Recommended to be installed every 10 to 15mtrs.

### Cable Extremity

Made from Stainless Steel 316 grade to provide high corrosion resistance. Provides swageless termination to the cable. Fits 08mm diameter cable. Fixed at one end of the lifeline.

### Corner Piece

Made from SS 316 grade to provide uninterrupted turning features to the lifeline. Fits with 08mm Dia cable.

**HORIZONTAL FALL ARREST SYSTEM (OR) - STANDING SEAM**

# FallSafe™

## Over the Head

### Key Features

- Complete SS316 system.
- Continuous movement with complete fall protection over long Spans.
- 100% water proofing.
- Shock Absorber to reduce jerk load on user & Structure.
- Also Available for standing seam roofs

### Applications

- Roof
- Pre- Engineered buildings

### Product Specification

Cable Extremity	SS316
Tensioner	SS316
Shock Absorber	SS316
Intermediate Bracket	SS316
Wire Rope	SS316 (8mm Diameter)
Detachable Trolley	SS316
Extremity Post	SS316
Intermediate Post	SS316
Corner Post	SS316

### SKU Information

Part number	Product description	Product SKU
CE01	Cable Extremity	BLSH-FP-HFA-CE01
PTDT02	Pass Through Detachable Trolley	BLSH-FP-HFA-PTDT02
RTAPI01	Roof Top Anchor Post Intermediate	BLSH-FP-HFA-RTAPI01
WR01	Wire Rope	BLSH-FP-HFA-WR01
TNH01	Tensioner for HLL	BLSH-FP-HFA-TNH01
SAB02	Shock Absorber	BLSH-FP-HFA-SAB02
RTAPE01	Roof Top Anchor Post Extremity	BLSH-FP-HFA-RTAPE01
CNRP01	Corner Post	BLSH-FP-HFA-CNRP01
SSC01	Standing Seam Clamps	BLSH-FP-HFA-SSC01



# FallSafe™

## Over the Head

### AVAILABLE OPTIONS FOR ROOF POSTS

#### Standard Roof Posts



#### Trapezoidal

Part number	Product description	Product SKU
RTAPI01	Roof Top Anchor Post (T) - Intermediate	BLSH-FP-HFA-RTAPI01
RTAPE01	Roof Top Anchor Post (T) - Extremity	BLSH-FP-HFA-RTAPE01
CNRP01	Roof Top Anchor Post (T) - Corner	BLSH-FP-HFA-CNRP01

#### Standing Seam

Part number	Product description	Product SKU
RTAPI02	Roof Top Anchor Post (SS) - Intermediate	BLSH-FP-HFA-RTAPI02
RTAPE02	Roof Top Anchor Post (SS) - Extremity	BLSH-FP-HFA-RTAPE02
CNRP02	Roof Top Anchor Post (SS) - Corner	BLSH-FP-HFA-CNRP02

#### Shielded Roof Post



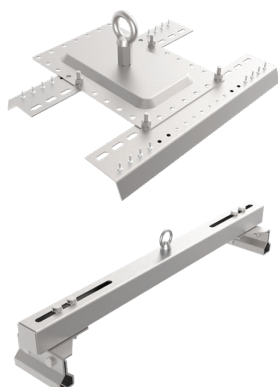
#### Trapezoidal

Part number	Product description	Product SKU
RTAPI01-C	Shielded Roof Post (T) - Intermediate (CED Coated)	BLSH-FP-HFA-RTAPI01-C
RTAPE01-C	Shielded Roof Post (T) - Extremity (CED Coated)	BLSH-FP-HFA-RTAPE01-C
CNRP01-C	Shielded Roof Post (T) - Corner (CED Coated)	BLSH-FP-HFA-CNRP01-C

#### Standing Seam

Part number	Product description	Product SKU
RTAPI02-C	Shielded Roof Post (SS) - Intermediate (CED Coated)	BLSH-FP-HFA-RTAPI02-C
RTAPE02-C	Shielded Roof Post (SS) - Extremity (CED Coated)	BLSH-FP-HFA-RTAPE02-C
CNRP02-C	Shielded Roof Post (SS) - Corner (CED Coated)	BLSH-FP-HFA-CNRP02-C

#### SRT Roof Post



#### Trapezoidal

Part number	Product description	Product SKU
RTAPI01-SR	SRT Roof Top Anchor Post (T) - Intermediate	BLSH-FP-HFA-RTAPI01-SR
RTAPE01-SR	SRT Roof Top Anchor Post (T) - Extremity	BLSH-FP-HFA-RTAPE01-SR
CNRP01-SR	SRT Roof Top Anchor Post (T) - Corner	BLSH-FP-HFA-CNRP01-SR

#### Standing Seam

Part number	Product description	Product SKU
RTAPI02-SR	SRT Roof Top Anchor Post (SS) - Intermediate	BLSH-FP-HFA-RTAPI02-SR
RTAPE02-SR	SRT Roof Top Anchor Post (SS) - Extremity	BLSH-FP-HFA-RTAPE02-SR
CNRP02-SR	SRT Roof Top Anchor Post (SS) - Corner	BLSH-FP-HFA-CNRP02-SR